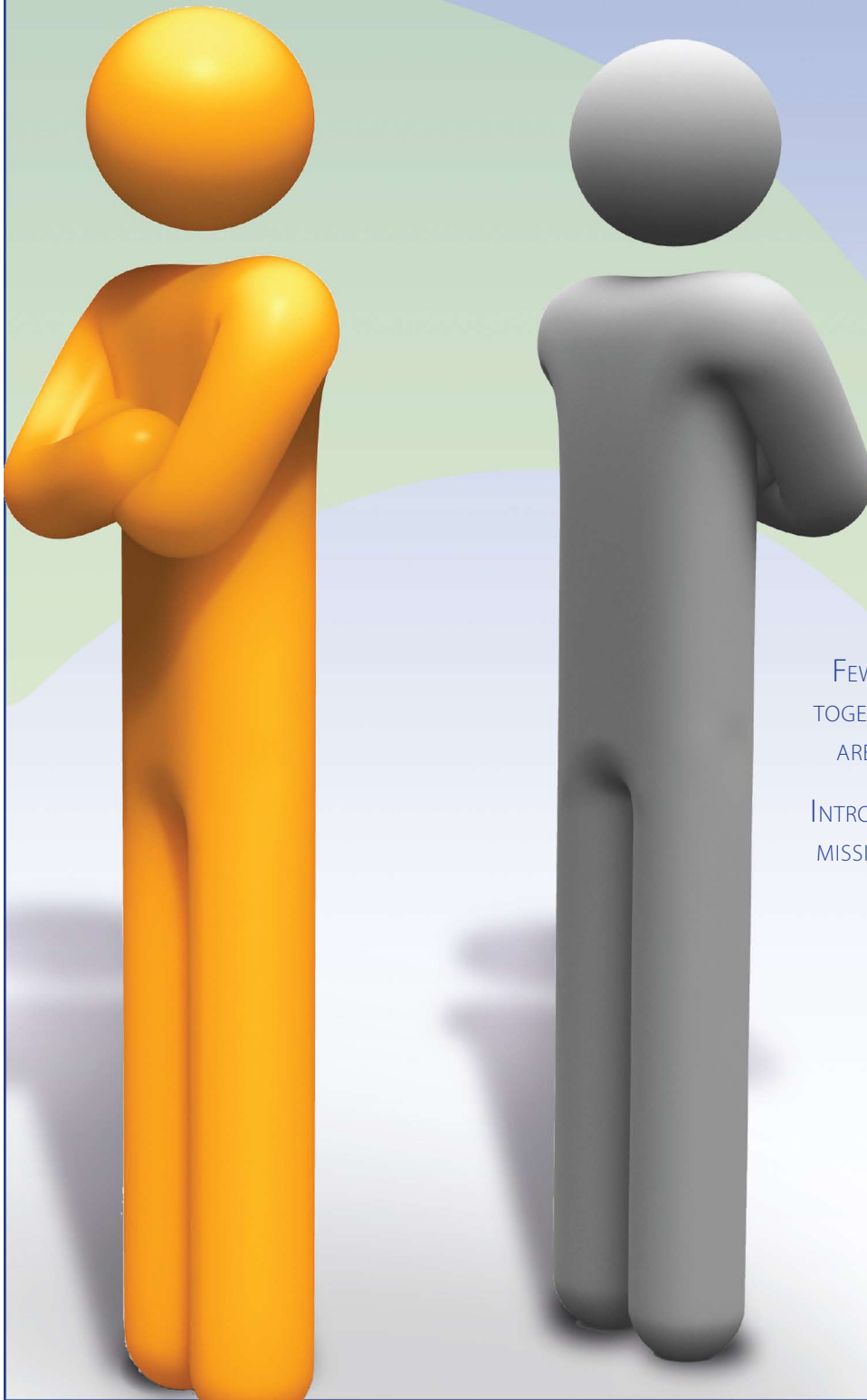


Strengthening the Local Church

through Sharpening Your Interpersonal Skills



FEW THINGS GLORIFY GOD MORE THAN LIVING TOGETHER IN A SPIRIT OF UNITY...AND FEW THINGS ARE MORE DESTRUCTIVE THAN NOT DOING SO.

INTRODUCING SYIS FOR CHURCHES...A LONG-TIME MISSIONARY TOOL NEWLY DESIGNED TO MEET THE NEEDS OF THE LOCAL CHURCH!



**International
Training
Partners, Inc.**

Introducing: Sharpening Your Interpersonal Skills for Churches!

LOVE IS THE GOAL!

A new command I give to you, that you love one another, even as I have loved you, that you also love one another. By this all men will know that you are My disciples...

JOHN 13:34-35

WHY SHOULD I TAKE THIS WORKSHOP?

Everyone wishes they did it right. You know, you say something that you regret, someone says something to you that you can't forget, they get offended or you get offended. It's life. Sadly, it is also life within the church.

Indeed, one of the most significant challenges we face on a day-to-day basis is living, working, and dealing with others. People come from different backgrounds and with different personalities—and learning to love with Jesus' love is tough! Sharpening Your Interpersonal Skills Workshops are designed to enhance the believer's knowledge, attitudes and skills in how we relate to family, friends, co-workers, as well as those within our church families. SYIS is ideal for church leaders as well as members of the congregation.

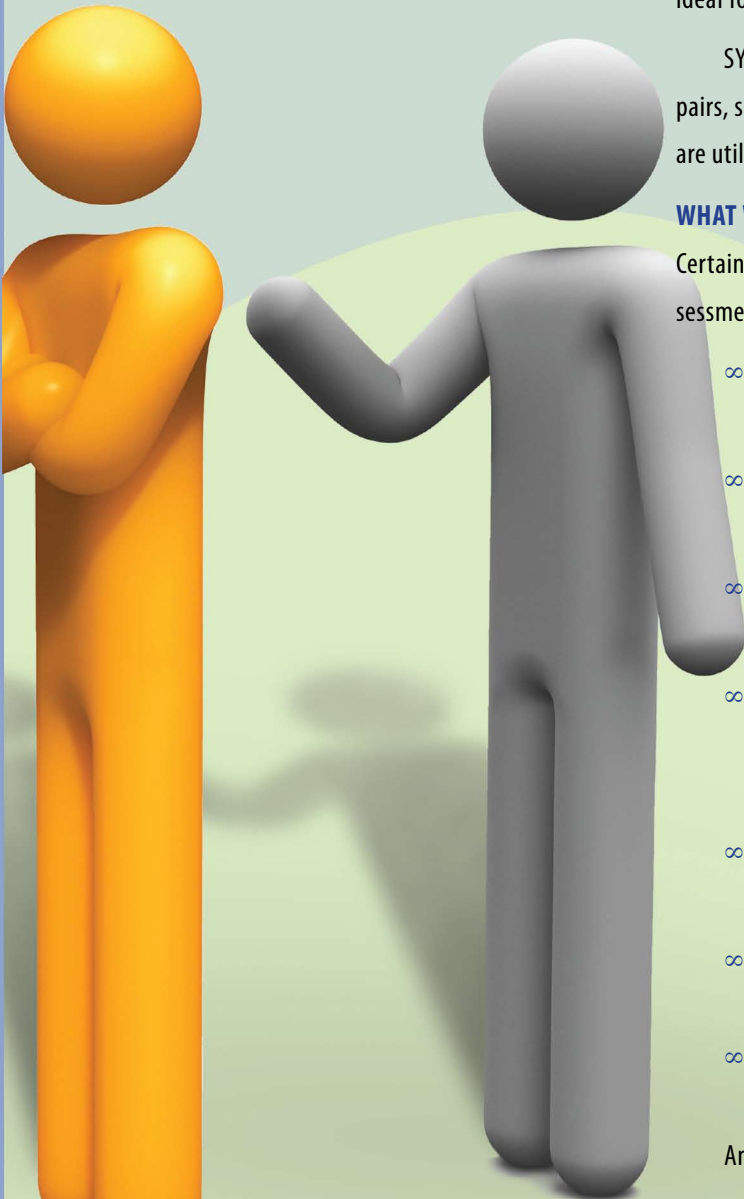
SYIS is highly interactive. We will work, share, and practice together in pairs, small groups, and as a whole group. The best methods of adult education are utilized so that maximum learning takes place.

WHAT WILL I LEARN?

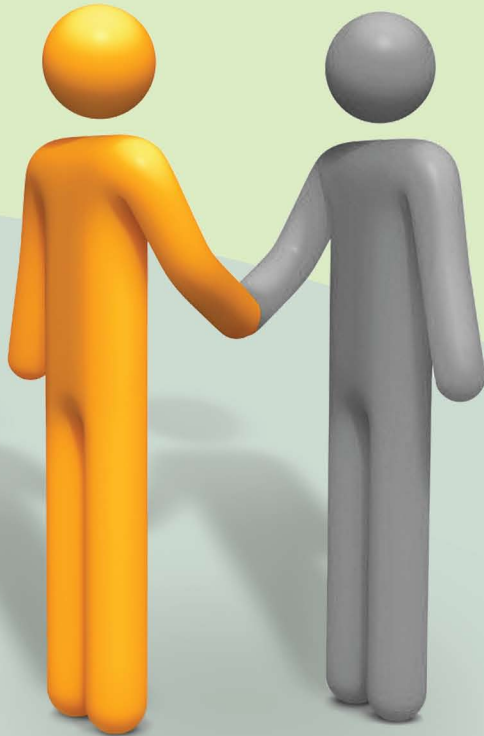
Certain elements of each workshop may vary due to individualized needs assessments. However, some of the many topics that will be considered are:

- ∞ **LOVING LISTENING:** Sharpen the skills needed to minister more effectively to others through listening well.
- ∞ **ADVICE AND PROBLEM SOLVING:** Learn about the role of advice and examine and practice steps involved in helping others solve problems.
- ∞ **CONFRONTING:** Discover biblical guidelines and helpful skills for confronting others and responding effectively when confronted in anger.
- ∞ **CONFLICT MANAGEMENT:** Explore biblical ground rules for effective conflict resolution and practice a step-by-step strategy for managing personal conflict and helping others manage conflict.
- ∞ **COMMUNITY:** Gain awareness about what destroys community and what attitudes and skills can help to build community.
- ∞ **STRESS:** Recognize the impact that stress has on yourself and others and develop a strategy to manage stress well.
- ∞ **SUFFERING LOSS:** Process personal loss and grief and identify ways to help others who are grieving or have suffered loss.

And much, much more. Contact ITP for more details.



Local church SYIS encounters...







- ∞ Serve the local church by making training in interpersonal skills available in relevant and effective ways leading to life change in individuals and resulting in strengthened local church communities.
- ∞ Biblical foundations: John 13:34-35, Colossians 3:12-14, "One another" passages
- ∞ Entire SYIS workshop offered in four encounters, if desired. Phase 1 is the starting place in the sequence and foundational for the others phases. Phases 2 through 4 may be done in any sequence following Phase 1.
- ∞ Each encounter will be facilitated by mixed-gender teams of at least two ITP-qualified facilitators.
- ∞ Flexibility of format and schedule allows facilitators to design each encounter to meet the needs of each church context.
- ∞ Encounter group size is ideally between 12-24 people.
- ∞ SYIS encounters may be hosted in a retreat setting or at the church facility and can be weeks or even months apart.
- ∞ High-value learning provided at low cost to local churches. Contact ITP for participant/package fees.

SCHEDULE/FORMAT POSSIBILITIES:

Each encounter will consist of four to five modules as detailed below.

Schedule formats may be designed around the needs of each church context. For example: Friday evening plus Saturday; Saturday plus one or two modules on Sunday afternoon, etc.

SEQUENCE AND CONTENT FOR EACH ENCOUNTER

<p>ENCOUNTER PHASE ONE</p>  <p>What does listening well have to do with loving like Jesus?</p>	<p>SERVING OTHERS THROUGH EFFECTIVE LISTENING</p> <ul style="list-style-type: none"> ∞ Intro session ∞ Relationship Killers ∞ Loving Listening ∞ Drawing Others Out ∞ Helping Others Solve Problems 	<p>ENCOUNTER PHASE THREE</p>  <p>How can you turn conflict into growth?</p>	<p>GROWING THROUGH CONFLICT</p> <ul style="list-style-type: none"> ∞ Confronting Others Well ∞ Receiving Confrontation Well ∞ Managing Personal Conflict ∞ Helping Others Manage Conflict ∞ (Additional topics: Restoring Broken Relations, Non Peer Conflict, etc)
<p>ENCOUNTER PHASE TWO</p>  <p>What's it take to experience real community?</p>	<p>BUILDING CHRISTIAN COMMUNITY</p> <ul style="list-style-type: none"> ∞ Living in Community ∞ Building Personal Trust ∞ Helping Others Grieve Well ∞ Being An Encourager ∞ (Additional expanded sessions available for these topics) 	<p>ENCOUNTER PHASE FOUR</p>  <p>What to do when stress has you at the end?</p>	<p>BALANCE AND LONG-TERM EFFECTIVENESS</p> <ul style="list-style-type: none"> ∞ Managing Stress I ∞ Managing Stress II ∞ Maintaining Balance and Margin ∞ The Battle for Sexual Purity ∞ (Additional topics: Organizational Systems for Balance)

International Training Partners

P.O. Box 64408
 Colorado Springs, CO 80962
www.itpartners.org
info@itpartners.org